

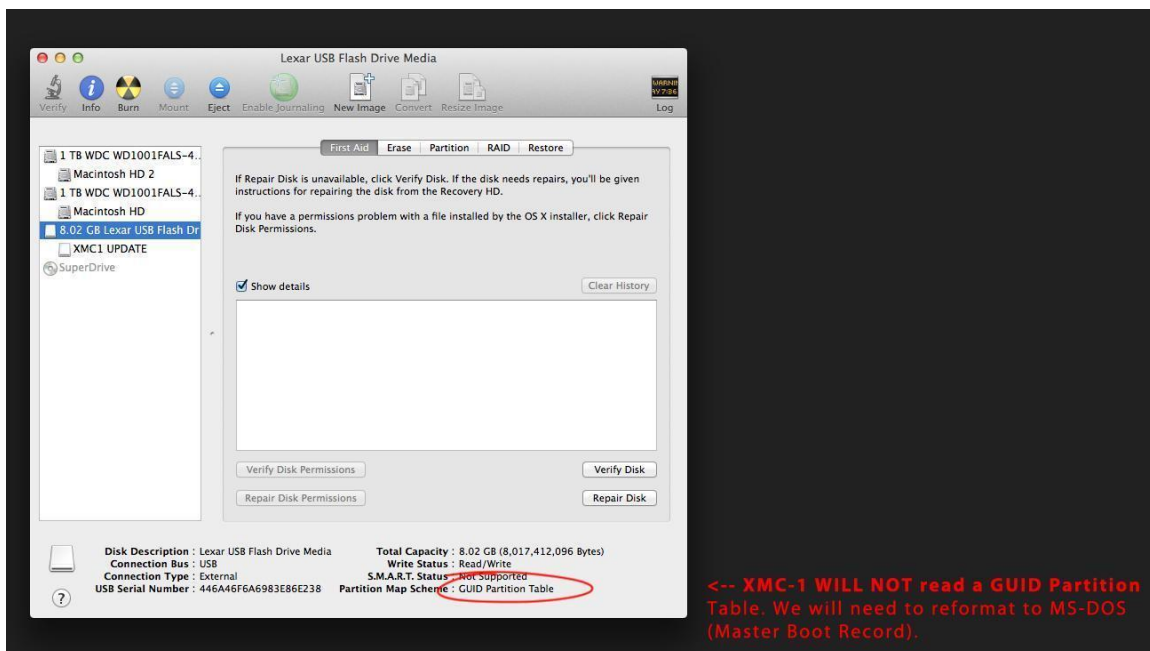
## Emotiva XMC-1 Firmware Update Instructions for Mac Users

The instructions in this document guide a user through the process of preparing a USB drive for use with the XMC-1, specifically, while working on a Mac OS X operating system.

The important thing to note is that Mac OS X defaults to a GUID or GPT partitioning scheme when partitioning most new drives. The XMC-1 USB ports are configured to recognize only Master Boot Record partitions at this time.

To properly prepare a USB drive for the XMC-1 please follow the procedures below:

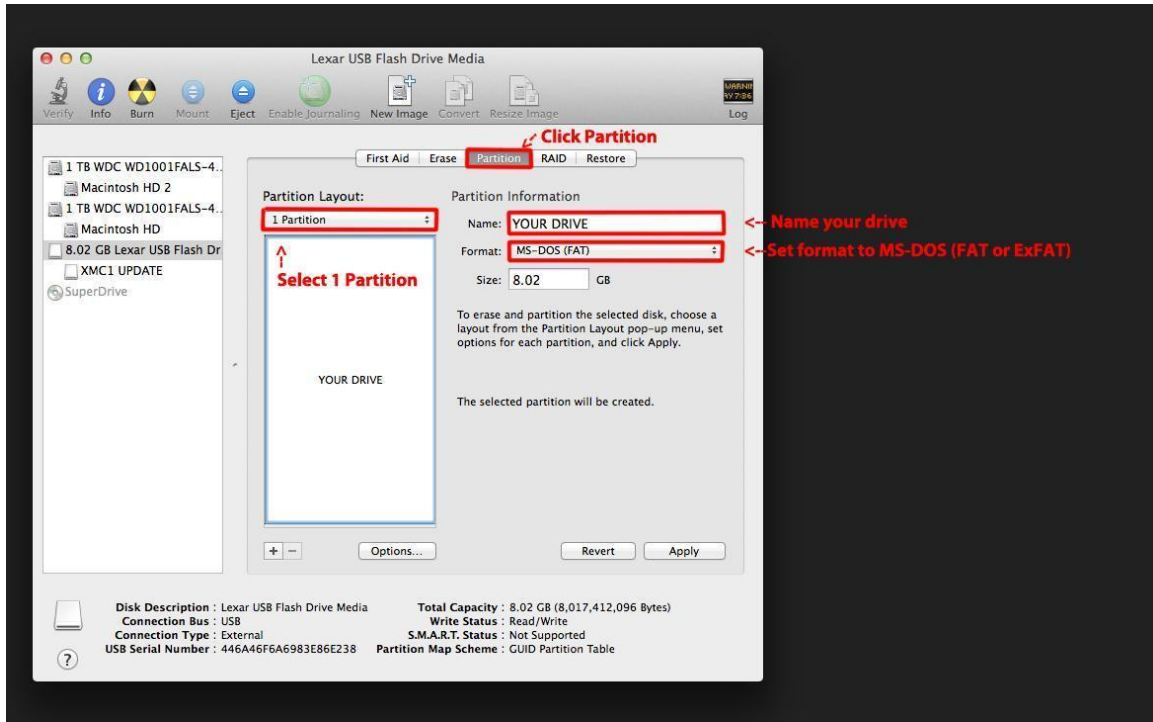
1. First, go to Finder -> Applications -> Utilities -> Disk Utility.app and double-click to open the Disk Utility application. Select the USB drive you would like to use with the XMC-1.



NOTE: You must select the actual device name, do not select a volume located on that device. (Devices are generally named with sizes and manufacturer info.)

2. Once you have selected the USB drive you would like to partition, click the "Partition" tab in Disk Utility. Change Partition Layout from "current" to "1 Partition". Give your drive a name in the Partition Information "Name" field. Select "MS-DOS (FAT)" or "ExFat" as the filesystem format. You should not normally need to adjust the size (See note below for multiple partitions).

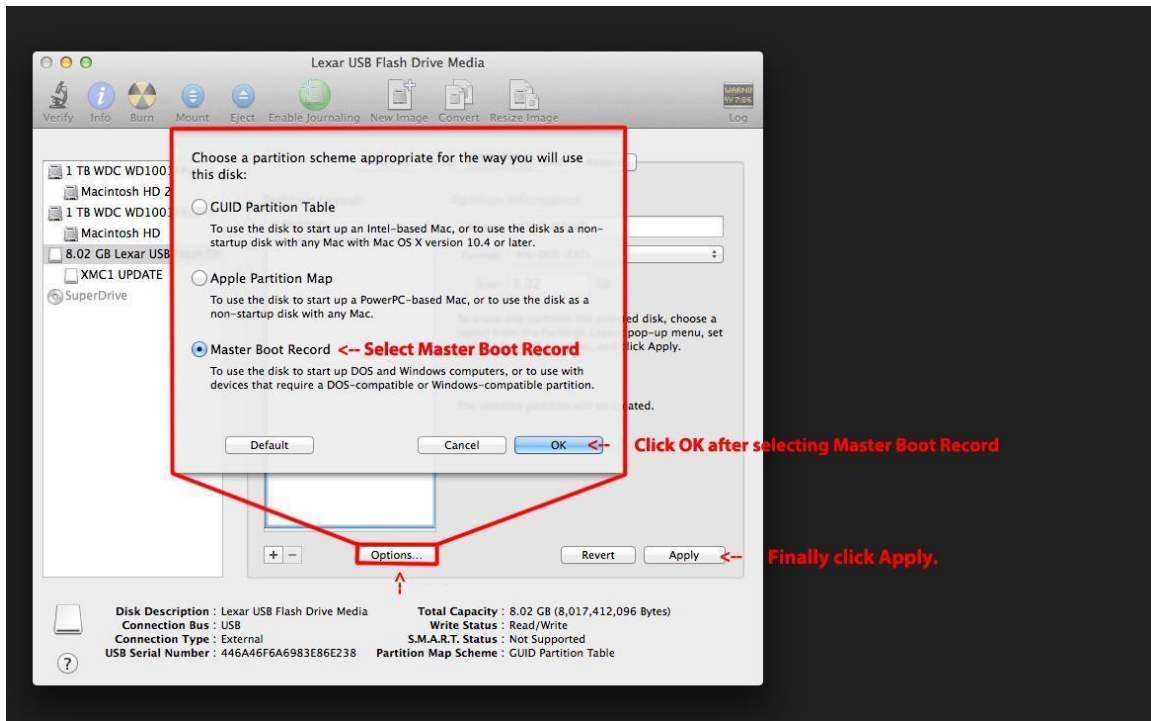
## Emotiva XMC-1 Firmware Update Instructions for Mac Users



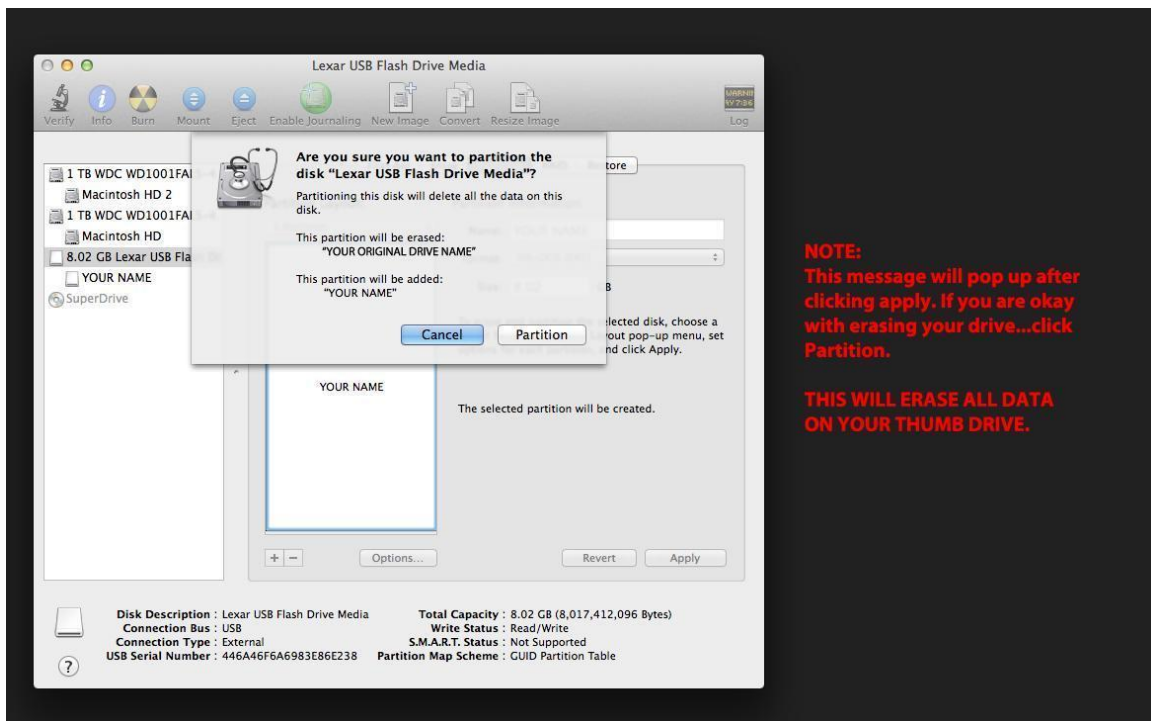
NOTE: If the FIRST partition on your drive has not been partitioned with a Master Boot Record it will not be recognized by the XMC-1, even if it has an MS-DOS (FAT or ExFAT) file-system available on it.

3. Click the “Options” button, then select “Master Boot Record” as the partition scheme and click “OK”. Lastly, click the “Apply” button to start confirmation of the partitioning.

## Emotiva XMC-1 Firmware Update Instructions for Mac Users

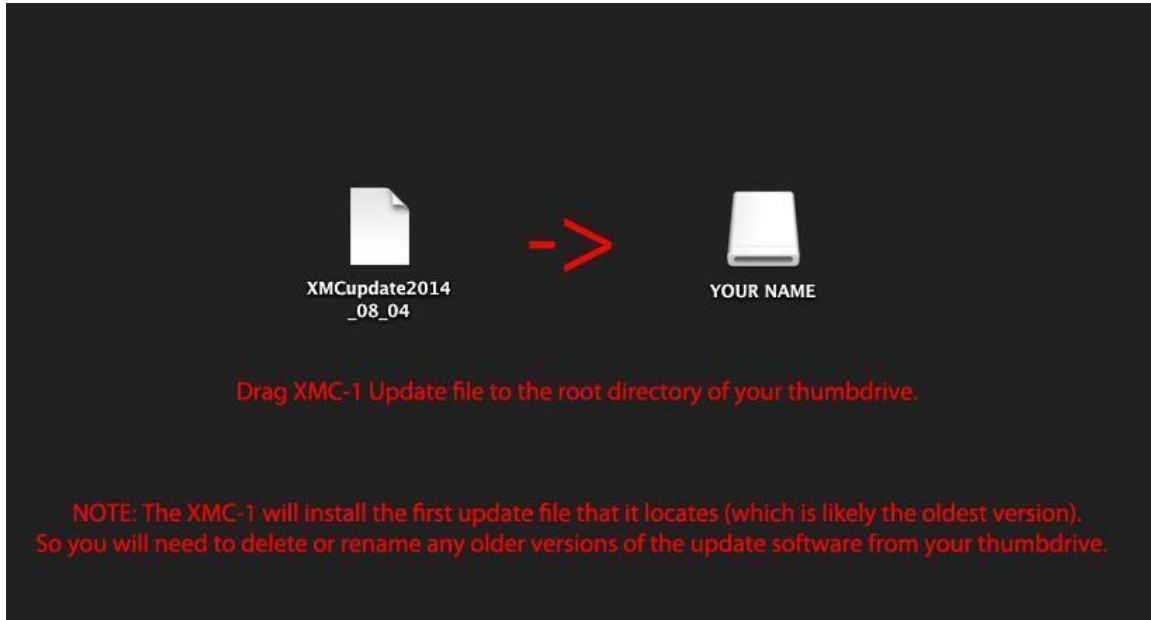


4. You will be prompted to confirm the operation, if you are happy with the prepared settings click "Partition". The drive will be re-partitioned and now recognizable when inserted into the XMC-1 USB ports.



## Emotiva XMC-1 Firmware Update Instructions for Mac Users

5. To complete the firmware update you will need to copy the update file into the root directory of your MBR partitioned MS-DOS (FAT or ExFAT) USB drive. The most current firmware version can be obtained from the Emotiva website. Once downloading is complete, in Finder, uncompress the zip file and open the uncompressed folder. Drag and drop the “XMCupdate” file to you USB drive.



NOTE: If you have earlier versions of the update file already on your USB drive you will need to rename or delete these files. The XMC-1 will install the first “XMCupdate” file that it locates on your drive, which may not be the most recent update.